

# FOOD SERVICE

Cleaning and sanitising where food is prepared for and eaten by the public has never been so important. Chemex specialises in a wide range of cleaners and sanitisers specifically formulated to combat bacteria and other harmful contaminants.

Chemex caters for all areas of food service. Most of this range carries MPI approvals so you can trust the quality, safety and effectiveness of each product.

The cleaning and sanitising solutions on this page are suitable for dishes, glass, plastic, cutlery, cooking vessels, hot plates and grills as well as walls, floors and benches.



## INFERNO

Heavy-Duty Oven and Hot Plate Cleaner

MPI Approved C31



Heavy-duty cleaner for quick and effective removal of fat, grease and carbonised soiling. Non-gel formula for easy use, making it ideal for hot plates and ovens. Inferno can also be used for cleaning/maintaining drains and sewers. This is a go-to product when quick action is key.

APPEARANCE	Slightly Yellow Liquid
FRAGRANCE	No Fragrance
pH	12.9 (@1% soln)

REORDER  
5L FK-CHXINFN05



## GP KLEEN

General Purpose Detergent  
MPI Approved C32

A general purpose detergent with easy-rinse formulation suitable for manual dishwashing. Soft on hands due to controlled suds level. Effective in hard or soft water. Septic tank safe, when used as directed.

APPEARANCE	Clear Green Liquid
FRAGRANCE	Lemon
pH	8.0 (@100%)

REORDER  
5L FK-CHXGRKN05 | 20L FK-CHXGRKN20



## CITRODISH

Hand Dishwashing Detergent  
MPI Approved C32

Medium-high foaming general purpose biodegradable hand dishwashing detergent that cuts through grease and oil. Suitable for domestic and commercial washing applications. May also be used for hard-surface cleaning and the handwashing of vehicles and windows. Septic tank safe, when used as directed.

APPEARANCE	Clear Yellow Liquid
FRAGRANCE	Lemon
pH	8.0 (@100%)

REORDER  
5L FK-CHXCITD05



## QUAT FOAM

Alkaline Cleaner & Sanitiser  
MPI Approved C31

Powerful concentrated alkaline cleaner and sanitiser which efficiently removes grease, oil and fat. A great choice for maintenance, food process and food service areas. It cleans and disinfects cooking vessels, utensils, benches and general janitorial areas.

APPEARANCE	Clear Blue Liquid
FRAGRANCE	No Fragrance
pH	13.5 (@100%)

REORDER  
5L FK-CHXQUTF05 | 20L FK-CHXQUTF20 | 200L FK-CHXQUTF200



## AQUA ZYME

Biological Wastewater & Grease Trap Treatment

This unique formulation will clean grease traps, drains and combat bad odours. The finely tuned blend of non-pathogenic bacteria, supplements bacterial flora in wastewater treatment and septic tanks. Aqua Zyme is suitable for commercial facilities and domestic use. Safe for food processing plants, hospitals, nursing homes, hotels, and abattoirs.

APPEARANCE	Yellow Liquid Suspension
FRAGRANCE	No Fragrance
pH	6 (@100%)

REORDER  
5L FK-CHXMAZ05



## STERIQ

Food Surface Sanitiser  
MPI Approved C43

Unscented food surface sanitiser, safe to use on food processing equipment, fittings, floors, walls and benches. Kills a wide range of pathogens, as well as mould in cool-rooms and refrigerators. Antimicrobial action helps fight unpleasant odours and neutral pH is safe for all surfaces.

APPEARANCE	Clear Red Liquid
FRAGRANCE	No Fragrance
pH	7.1 (@100%)

REORDER  
5L FK-CHXSTIQ05 | 20L FK-CHXSTIQ20



## STERI VAP

Evaporating Sanitiser  
MPI Approved C43

Powerful multi-purpose, alcohol-based sanitiser, effective against a wide range of pathogens. Disinfects a variety of surfaces including hands and food contact areas. This fast drying, residue-free disinfectant is an excellent choice for moisture sensitive areas such as conveyors, switch gear and electronic components.

APPEARANCE	Clear Pink Liquid
FRAGRANCE	No Fragrance
Ethanol	70% w/v

REORDER  
APP BK-CHXSC01 | 5L FK-CHXSC05 | 20L FK-CHXSC20



## OG1-CLEAN

Combination Oven Cleaner

A specialist cleaner for the toughest cleaning tasks. Used for combination/ commercial ovens, grills, racks and deep fryers. OG1-Clean removes a variety of heavy soiling, including grease, oils and carbonised deposits.

APPEARANCE	Clear Liquid
FRAGRANCE	No Fragrance
pH	11.9 (@1% soln)

REORDER  
5L FK-CHXOG105 | 20L FK-CHXOG120



## OG2-CARE

Combination Oven Neutralising Solution

A neutralising solution for combination ovens to protect surfaces and to prevent water scaling. It neutralises cleaning detergent residues in final rinse for clean and shiny surfaces. It can be applied by auto-dose system or manually. For best results use in combination with OG1-Clean.

APPEARANCE	Clear Green Liquid
FRAGRANCE	No Fragrance
pH	1.5 (@100%)

REORDER  
5L FK-CHXOGC05 | 20L FK-CHXOGC20



## PRISTINE

Automatic Dish and Glass Washing Liquid  
MPI Approved C31

High-strength liquid detergent formulated for use in automatic commercial dish and glasswash machines. Suitable for use with all common ware materials such as crockery, china, glass, stainless steel, plastics and kitchen utensils. Septic tank safe when used as directed.

APPEARANCE	Clear & Slightly Yellow Liquid
FRAGRANCE	No Fragrance
pH	12.5 (@1% soln)

REORDER  
5L FK-CHXPMDW05 | 20L FK-CHXPMDW20



## PINNACLE

Non-Caustic Auto-Dish and Glass Washing Liquid  
MPI Approved C31

A safer alternative to traditional caustic-based formulations. This concentrated auto-dish and glass wash detergent is suitable for a wide range of surfaces - cutlery, crockery, china, stainless steel and plastic/synthetic items. May be used also as a safer heavy-duty soaking agent for aluminium components. Septic tank safe when used as directed.

APPEARANCE	Clear Colourless Liquid
FRAGRANCE	No Fragrance
pH	12.6 (@100%)

REORDER  
5L FK-CHXPINL05 | 20L FK-CHXPINL20



## RINZA

Spot-Free Rinse Additive  
MPI Approved C31

A premium rinse additive for streak-free finish. Designed for automated dishwashers, it aids drying process to ensure spot-free dishes. Sparkling finish for crockery, cutlery, and glassware. Septic tank safe, when used as directed.

APPEARANCE	Clear Blue Liquid
FRAGRANCE	No Fragrance
pH	2.6 (@100%)

REORDER  
5L FK-CHXRINZ05 | 20L FK-CHXRINZ20



## DESTAINER

Multi-Purpose Stain Remover

High strength oxygenated bleach for a wide spectrum of applications. An excellent pre-soaker and stain remover for crockery, plastics and cutlery. Also cleans and sanitises laundry fabrics. Not suitable for use on delicates such as wool or silk.

APPEARANCE	White Powder
FRAGRANCE	No Fragrance
pH	10.5 (@1% Soln)

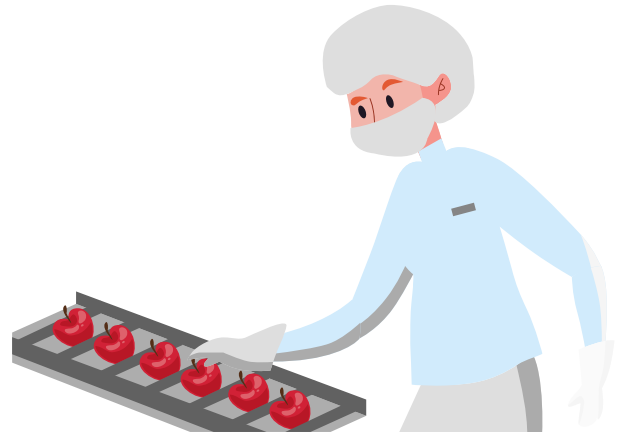
REORDER  
10KG FK-CHXDEST10



# FOOD PROCESS

An important area of food safety is cleaning using effective detergents to remove soiling, and sanitisers to kill bacteria and spores. Chemex has specialist formulations designed to maintain high levels of hygiene in food process premises.

This section includes heavy-duty and concentrated solutions for a wide range of food process surfaces. Whether cleaning or sanitising there are options for floors, walls, equipment, CIP systems and grease traps.



## iFOAM

Foaming Cleaner & Sanitiser  
MPI Approved C31



A chlorine-based, high-foam cleaner sanitiser that can be used manually, with automatic dilution systems, or with foaming devices to clean and sanitise food process surfaces. The thickened, concentrated formula is ideal for large process areas, which require regular and efficient cleaning.

APPEARANCE	Clear Slight Yellow Liquid
FRAGRANCE	No Fragrance
pH	12.0 (@1% soln)

REORDER  
20L FK-CHXIFM20 | 200L FK-CHXIFM200



## 3D-GREASE

Degreaser For Food Processing Industry  
MPI Approved C31

A multi purpose degreaser, designed for the toughest cleaning tasks in the food processing industry. It removes heavy soiling such as grease, oil and soap deposits. At recommended dilution rates it is safe to use on all surfaces, and can be used for cleaning benches, walls, floors and machinery.

APPEARANCE	Clear Blue Liquid
FRAGRANCE	No Fragrance
pH	13.5 (@100%)

REORDER  
5L FK-CHX3DGE05 | 20L FK-CHX3DGE20 | 200L FK-CHX3DGE200



## ALL-BRITE

Acid Cleaner & Sanitiser  
MPI Approved C41

Specifically designed to remove mineral deposits, milk stone build up and to sanitise in one operation. All-Brite also removes surface rust from ferrous metals and protects against subsequent re-rusting. This product is suitable for CIP equipment, spray systems, soaking tanks or manual cleaning.

APPEARANCE	Clear Colourless Liquid
FRAGRANCE	No Fragrance
pH	2 (@1% soln)

REORDER  
5L FK-CHXALLBR05 | 20L FK-CHXALLBR20



## BEER LINE CLEANER

Chlorinated CIP Cleaner  
MPI Approved C31

Alkaline detergent to rapidly break down beer line soiling. Ideal for cleaning hard-to-remove soiling of food processing vessels and heavy duty cleaning of hard surfaces in general. Also suitable for automatic dish and glass washing machines, or as a general cleaner for floors, walls and benches.

APPEARANCE	Clear Colourless Liquid
FRAGRANCE	No Fragrance
pH	12.5 (@1% soln)

REORDER  
5L FK-CHXBL05



## SEQUEST

CIP Liquid Detergent  
MPI Approved C31

Low foaming CIP detergent. Suitable for processing equipment where CIP cleaning is required. Not recommended for aluminium or other soft metal items.

APPEARANCE	Clear Colourless Liquid
FRAGRANCE	No Fragrance
pH	12.9 (@1% soln)

REORDER  
20L FK-CHXSEQT20 | 200L FK-CHXSEQT200



## CLEANER SANITISER

Detergent Sanitiser  
MPI Approved C41

Concentrated cleaner sanitiser which is equally effective in hard or soft water. Safe on all surfaces and suitable for all food processing areas and machinery. When diluted, can also be used as an anti-bacterial spray 'n' wipe cleaner. Septic tank safe, when used as directed.

APPEARANCE	Clear Purple Liquid
FRAGRANCE	No Fragrance
pH	12.5 (@100%)



REORDER  
5L FK-CHXCLSR05



## FOAM Q

Foaming Cleaner & Sanitiser  
MPI Approved C43

A powerful cleaner & sanitiser, effective against a wide range of microorganisms. It can be applied manually or with a foaming gun, which makes it ideal for treatment of large and otherwise hard to access areas.

APPEARANCE	Clear Green Liquid
FRAGRANCE	No Fragrance
pH	14.0 (@100%)



REORDER  
20L FK-CHXFOMQ20



## HYPHO WHITE

Concentrated Sodium Hypochlorite  
Solution 12%  
MPI Approved Generic 4.1.2

Commercial grade concentrated Sodium Hypochlorite solution for a wide range of applications. It can be used for cleaning and sanitising all food processing operations, water chlorination, laundry stain removal, as well as moss and mould removal.

APPEARANCE	Clear & Slightly Yellow Liquid
FRAGRANCE	No Fragrance
pH	13 (@100%)



REORDER  
20L FK-CHXHW20 | 200L FK-CHXHW200



## STERI VAP

Evaporating Sanitiser  
MPI Approved C43

Powerful multi-purpose, alcohol-based sanitiser, effective against a wide range of pathogens. Disinfects a variety of surfaces including hands and food contact areas. This fast drying, residue-free disinfectant is an excellent choice for moisture sensitive areas such as conveyors, switch gear and electronic components.

APPEARANCE	Clear Pink Liquid
FRAGRANCE	No Fragrance
Ethanol	70% w/v



REORDER  
APP BK-CHXSC01 | 5L FK-CHXSC05 | 20L FK-CHXSC20



## PERFORM

Stabilised Peracetic Acid in Hydrogen Peroxide  
MPI Approved Generic 4.1.2  
Kosher & Halal Certified

Powerful formulation that provides broad spectrum microbial killing power against aerobic and anaerobic bacteria, yeasts, moulds, viruses, fungi and their spores. Can be used for CIP systems, fruit and vegetable treatment, laundry, food and beverage processing, drain and raw water treatment.

APPEARANCE	Colourless Liquid
FRAGRANCE	No Fragrance
pH	< 2.0 (@100%)



REORDER  
25L BI-PROX

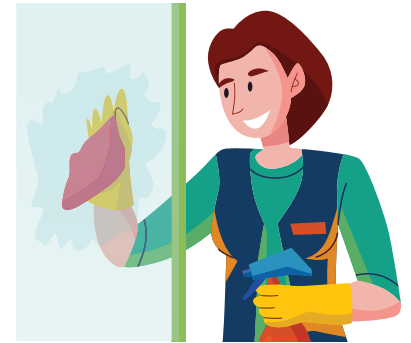


# WASHROOM

Clean and hygienic bathrooms look pristine and smell fresh. Chemex washroom products help to achieve and maintain high standards of cleanliness.

The range includes powerful cleaners, deodorisers, disinfectants and odour neutralisers. It has been designed for toilets, urinals, showers, sinks, taps and tiles.

Ask our team about our safe and environmentally responsible cleaning products using naturally occurring microbes.



## JANIBRITE

Toilet & Bathroom  
Cleaner/ Disinfectant

MPI Approved C32



Removes stains, uric encrustation from toilet bowls and urinals; as well as scale and mineral deposits from showers and baths. Cleans, disinfects and deodorises all in one step. Biodegradable and septic tank safe, when used as directed.

APPEARANCE	Blue Viscous Liquid
FRAGRANCE	Floral Musk
pH	1.25 (@100%)

REORDER  
5L FK-CHXBOWB05 | 20L FK-CHXBOWB20



## SHOWER AID

Shower And Tile De-scaling Cleaner  
MPI Approved C32

Powerful cleaner and sanitising detergent that removes calcium and lime deposits. Ideal in hard-water areas, acrylic, chrome, stainless steel, ceramic, and fibreglass. Safe to use on shower screens, tiles, taps, sinks, toilets. Not suitable for use on marble.

APPEARANCE	Clear Blue Liquid
FRAGRANCE	Floral
pH	1.5 (@100%)

REORDER  
5L FK-CHXSHWA05 | 20L FK-CHXSHWA20 | 200L FK-CHXSHWA200



## BIO-BLOX

Deodoriser & Sanitiser for Urinals

A fast-acting deodoriser and sanitiser that leaves urinals clean and fresh. Naturally occurring microbes help to break down the build-up of uric salts, which constrict the flow of wastewater and eliminate odour-causing bacteria.

APPEARANCE	Off-White Pellet
FRAGRANCE	Lemon

REORDER  
4 Kilo FK-CHXBIBX04



## BAC-ACTIVE

Active Bacterial Cleaning Agent  
MPI Approved C32

Bio-enzymatic cleaner for 'difficult to clean' areas such as: non-sealed tiles, grout, lino, concrete and synthetic membrane flooring systems. This high-foaming, soil-activated cleaning agent provides prolonged cleaning action and it is an ideal choice for heavy soiling of porous, or semi-porous surfaces.

APPEARANCE	Clear Green Liquid
FRAGRANCE	Fruity
pH	7.5 (@100%)

REORDER  
5L FK-CHXBAC05 | 20L FK-CHXBAC20



## ODAFRESH

Floral Deodoriser

A fast-acting deodoriser and odour neutraliser. It attacks and neutralises odour molecules, leaving a lingering floral scent. Ideal for use in bathroom/toilet areas and controlling a wide range of malodours including decaying garbage, cooking, smoke, animal and body odours.

APPEARANCE	Clear Colourless Liquid
FRAGRANCE	Floral
pH	6.5 (@100%)

REORDER  
5L FK-CHXODAF05



## SANI KLENZ

Ceramic Stainless Acid Cleaner  
MPI Approved C32

Acidic cleaner sanitiser for bathroom areas, which cleans, disinfects and deodorises - all in one action. Ideal for ceramic and stainless steel surfaces. Effortlessly removes scale, uric encrustations, toilet stains and prevents algae bloom.

APPEARANCE	Hazy Blue Liquid
FRAGRANCE	No Fragrance
SPECIFIC GRAVITY	1.05
pH	1.0 (@100%)

REORDER  
5L FK-CHXSANK05



## SUPER SPICE

Cleaner And Disinfectant

A powerful cleaner and disinfectant, with pleasant spice fragrance. The combination of excellent antimicrobial properties, surfactants and mild pH, makes it safe and effective on all surfaces. Septic tank safe, when used as directed.

APPEARANCE	Clear Green/Brown Liquid
FRAGRANCE	Spice
pH	8.79 (@100%)

REORDER  
5L FK-CHXSUPS05 | 20L FK-CHXSUPS20 | 200L FK-CHXSUPS200



## SUPER CITRUS

Cleaner and Disinfectant  
MPI Approved C32

A powerful cleaner disinfectant with pleasant citrus fragrance. A combination of excellent antimicrobial properties, surfactants and mild pH, makes it safe and effective on a wide range of surface. Septic tank safe, when used as directed.

APPEARANCE	Clear Yellow Liquid
FRAGRANCE	Lemon
pH	9.33 (@100%)

REORDER  
5L FK-CHXSUPC05 | 20L FK-CHXSUPC20



## NEW WAVE

Disinfectant

Powerful general disinfectant with a pleasant fragrance for bathrooms, toilets, or anywhere a high standard of hygiene is required. Septic tank safe when used as directed.

APPEARANCE	Clear Blue Liquid
FRAGRANCE	No Fragrance
pH	7.27 (@100%)

REORDER  
5L FK-CHXNW05 | 20L FK-CHXNW20



## G-PINE

Cleaner Disinfectant  
MPI Approved C32

A powerful cleaner disinfectant with natural pine oil for enhanced anti-microbial action. G-pine can be used for bathrooms, toilets, walls, floors and general janitorial applications.

APPEARANCE	Clear Green Liquid
FRAGRANCE	Pine
pH	7.0 (@100%)

REORDER  
5L FK-CHXGPE05 | 20L FK-CHXGPE20 | 200L FK-CHXGPE200



## BIG BLEACH

Stabilised Commercial Chlorine Bleach  
MPI Approved C41

A commercial strength bleach suitable for domestic and commercial applications. Multi-purpose formula can be used as a cleaner and also as a powerful chlorine sanitiser. Effective against a wide range of bacteria, fungi and algae.

APPEARANCE	Clear & Slightly Yellow Liquid
FRAGRANCE	No Fragrance
pH	11.0 (@1% soln)

REORDER  
5L FK-CHXBIG05 | 20L FK-CHXBIG20 | 200L FK-CHXBIG200



## ALL SURFACE

Multi-Purpose Cleaner Sanitiser  
MPI Approved C32

Multi-purpose cleaner sanitiser ideal for a wide range of hard surfaces. The specific blend of surface-safe surfactants and antibacterial essential oil, assists maintenance of polished and non-polished floor surfaces, bathrooms and general janitorial applications.

APPEARANCE	Clear Red Liquid
FRAGRANCE	Floral Pine
pH	9.5 (@100%)

REORDER  
5L FK-CHXALLS05 | 20L FK-CHXALLS20 | 200L FK-CHXALLS200



# HOUSEKEEPING

Consistently presenting clean, tidy and odour-free commercial accommodation is critical to a healthy and satisfying guest experience. Cutting corners is not an option and it is essential to always use good quality, safe chemicals at correct dilution rates.

The Chemex range includes commercial strength formulae for deep cleaning applications and as to maintain high levels of cleanliness and hygiene. There are cleaning and deodorising solutions for a wide variety of surfaces including chrome, vinyl, rubber, carpet, floor, walls, doors and curtains.



## ALL SURFACE Multi-Purpose Cleaner Sanitiser

MPI Approved C32



Multi purpose surface cleaner, ideal for a wide range of hard surfaces. The specific blend of surface-safe surfactants and anti-bacterial essential oil, assists maintenance of polished and non-polished floor surfaces, bathrooms and general janitorial applications.

APPEARANCE	Clear Red Liquid
FRAGRANCE	Floral Pine
pH	9.5 (@100%)

REORDER  
5L FK-CHXALLS05 | 20L FK-CHXALLS20 | 200L FK-CHXALLS200



## HD CHLORSAN

Stabilised Commercial Chlorine Bleach

This heavy duty cleaner and sanitiser takes care of stubborn soiling, and disinfects in one action. Effective against a wide range of bacteria and fungi and can also be used for a janitorial application.

APPEARANCE	Slightly Yellow, Clear Liquid
FRAGRANCE	No Fragrance
pH	11.5 (@1% soln)

REORDER  
1L FK-CHXHDCN01 | 5L FK-CHXHDCN05



## NEUTRAL CLEANER

Active Bacterial Cleaning Agent

A concentrated formula for difficult to clean surfaces such as non-sealed tiles, grout and lino. Soil activated, it is also excellent as a daily control treatment for urinals and toilet areas. A safe floor cleaner to use on concrete, vinyl and synthetic membrane flooring systems.

APPEARANCE	Clear Green Liquid
FRAGRANCE	Fruity
pH	7.5 (100%)

REORDER  
5L FK-CHXNUTC05



## CRYSTAL

Window Cleaner  
MPI Approved C32

A fast drying, streak-free cleaner for a wide array of applications. It can be used on glass, tiles, stainless steel, chrome, laminate and vinyl surfaces. It is also suitable as an additive for windscreen washing reservoirs. It leaves surfaces spotlessly streak-free.

APPEARANCE	Clear Blue Liquid
FRAGRANCE	No Fragrance
SPECIFIC GRAVITY	1.0
pH	10.5 (@100%)

REORDER  
5L FK-CHXCRYL05 | 20L FK-CHXHW200



## SHEEN ON

Multi-Surface Reviver

Safe, economical rejuvenator with non-greasy formulation that rejuvenates and protects against discolouration, helping to extend the life of surfaces. Contains an antistatic agent reducing dust re-deposition, and natural oils. No alcohol or harsh solvents so is ideal on polished wood, plastics, vehicle dashboards, vinyl and rubber.

APPEARANCE	Creamy White Liquid
FRAGRANCE	Soft Floral
pH	6.0 (@100%)

REORDER  
5L FK-CHXFUP05



## ODAFRESH

Floral Deodoriser

A fast-acting deodoriser and odour neutraliser. It attacks and neutralises odour molecules, leaving a lingering floral scent. Ideal for use in bathroom/toilet areas and controlling a wide range of malodours including decaying garbage, cooking, smoke, animals and body odours.

APPEARANCE	Clear Colourless Liquid
FRAGRANCE	Floral
pH	6.5 (@100%)

REORDER  
5L FK-CHXODAF05



## CRÈME CLEANER

Mildly Abrasive Cream Cleaner  
MPI Approved C32

A cream cleaner for a wide range of applications including kitchen, bathroom and general housekeeping surfaces. Its mild abrasive aids removal of stubborn soiling. Septic tank safe, when used as directed.

APPEARANCE	Creamy Off-White Liquid
FRAGRANCE	Mild Spice
pH	8.8 (@100%)

REORDER  
1L FK-CHXCCL01 | 5L FK-CHXCCL05



## HAND CARE

Hand hygiene and personal care go together, reducing the risk of cross contamination. The three key components for managing hand hygiene are having systems in place for regular washing, chemicals that suit the situation, and compliance.

Chemex handcare products include both scented and unscented options, as well as natural abrasives and moisturising options.



## AB FOAM

Antibacterial Foaming Soap  
MPI Approved C51

An unscented foam soap with skin conditioner and an effective antibacterial agent. A smooth creamy lather cleans hands thoroughly without drying them out. Suitable for a wide range of industries.

APPEARANCE	Clear Colourless Liquid
FRAGRANCE	No Fragrance
pH	6.5 (@100%)

REORDER  
5L FK-CHXABF05



## FOAMING HAND SANITISER

No-Rinse Hand Sanitiser  
MPI Approved C52

Alcohol-free, foaming hand sanitiser that instantly kills bacteria and leaves your hands feeling clean and fresh.

APPEARANCE	Clear Colourless Liquid
FRAGRANCE	Floral
pH	6.0 (@100%)

REORDER  
5L FK-CHXFHS05



## CLEAR VAP

Evaporating Hand Sanitiser  
MPI Approved C54

Powerful alcohol-based, fast evaporating hand sanitiser, that leaves your hands feeling hygienic and fresh. Sanitise your soap-washed, dried hands in one easy step. It can also be used between washes to maintain high hygiene levels.

APPEARANCE	Colourless Viscous Liquid
FRAGRANCE	No Fragrance
pH	7.0 (@20%)

REORDER  
5L FK-CHXCV05



## NATURAL

Liquid Hand Soap  
MPI Approved C56

A fragrance-free hand soap with skin moisturising and conditioning properties. Suitable for daily use, it has a pleasant creamy lather that doesn't dry hands, keeping them soft and supple. Palm oil and salt-free.

APPEARANCE	Clear Colourless Liquid
FRAGRANCE	No Fragrance
pH	6.5 (@100%)

REORDER  
5L FK-CHXNATL05





## CITRUS SOFT

Abrasive Hand Cleaner

A pleasantly fragranced citrus oil-based hand cleaner for washing away heavy soiling. Contains a natural abrasive which helps to remove ingrained stubborn grease and dirt. This heavy-duty hand cleaner is enriched with natural moisturisers to keep skin in good condition.

APPEARANCE	Creamy Green Liquid
FRAGRANCE	Lime
pH	7.0 (@100%)



REORDER  
5L FK-CHXCS04



## DERMTASTIC

Perfumed Liquid Hand Soap  
MPI Approved C52

Liquid soap with skin conditioning properties, leaves your hands clean, soft and fresh. Septic tank safe.

APPEARANCE	Creamy Pink Liquid
FRAGRANCE	Sweet Floral
pH	6.5 (@100%)



REORDER  
5L FK-CHXDTC05



## FLOOR CARE

A regular maintenance programme is essential for the long-lasting appearance and durability of floors. Shiny, clean floors look good and are easier to maintain. Clean carpets gives the room a visual lift.

Chemex floorcare solutions are designed to combat wear and tear in both situations, with additional treatments for tiles, grout, lino, concrete, carpets and synthetic membrane flooring.



## LF CARPET SHAMPOO

Carpet Shampoo



Low-foam concentrated carpet shampoo that provides excellent results in hot or cold automatic systems. When diluted, it can be used as a pre-treatment to aid removal of most stubborn stains. Septic tank safe, when used as directed.

APPEARANCE	Colourless Clear Liquid
FRAGRANCE	Fruity
pH	10.0 (@100%)

REORDER  
5L FK-CHXLFC05 | 20L FK-CHXLFC20



## NEUTRAL CLEANER

Active Bacterial Cleaning Agent

A concentrated formula for difficult to clean surfaces such as non-sealed tiles, grout and lino. Soil activated, it is also excellent as a daily control treatment for urinals and toilet areas. A safe floor cleaner to use on concrete, vinyl and synthetic membrane flooring systems.

APPEARANCE	Clear Green Liquid
FRAGRANCE	Fruity
pH	7.5 (@100%)



REORDER  
5L FK-CHXNUTC05



## THUNDER

Floor Polish Stripper

Powerful floor stripping agent for removing water-based floor polish finishes or sealers.

APPEARANCE	Clear Liquid
pH	11.0 (@100%)



REORDER  
5L FK-CHXTHS05 | 20L FK-CHXTHS20



## BLUE SKIES

Neutral Floor Cleaner

Effective cleaner suitable for all floor types. It is easy to use and its neutral pH makes it safe on sealed and unsealed floors. Septic tank safe, when used as directed.

APPEARANCE Yellow Viscous Liquid  
pH 8.0 (100%)



REORDER  
5L FK-CHXBSC05 | 20L FK-CHXBSC20



## LIGHTENING

High Gloss Floor Polish

Heavy duty, floor polish and sealer that provides durable scuff and black heel mark protection. It is easy to apply and an even application results in a wet look and glossy finish.

APPEARANCE White Opaque Liquid  
pH 9.0 (100%)



REORDER  
5L FK-CHXLP05 | 20L FK-CHXLP20



## TEXTILE CARE

Cost efficiencies in your commercial laundry division can be dependent on the chemicals used and the processes in place. Used correctly and in the right dilution, Chemex provides economical wash solutions.

Chemex offers an extensive range that includes bleach, disinfectant, softener and sour. There are commercial strength concentrates and specialist solutions for removing organic and inorganic laundry stains.



## PREMDET

Liquid Laundry Detergent

MPI Approved C33



A specialised laundry detergent designed for automated laundry dispensing systems. The finely-tuned blend of surfactants makes it suitable for a wide range of textiles. Designed to use with builders for heavily soiled laundry, or by itself for light to medium soiling.

APPEARANCE Clear Green Liquid  
FRAGRANCE Floral Musk  
pH 8.5 (@100%)

REORDER  
20L FK-CHXPRMD20 | 200L FK-CHXPRMD200 | 1000L FK-CHXPRMD1000



## PREMBUILD

Liquid Laundry Builder  
MPI Approved C33

An alkaline builder for use alone in a "break" wash, or in conjunction with PremDet in a main wash. This concentrated formulation boosts detergent performance for optimal soil removal.

APPEARANCE Clear Colourless Liquid  
pH 13 (@1% soln)



REORDER  
20L FK-CHXPRMB20 | 200L FK-CHXPRMB200 | 1000L FK-CHXPRMB1000



## PREMSOFT

Laundry Fabric Softener And Sour  
MPI Approved C43

A concentrated fabric softener that leaves laundry feeling soft and fresh. Specially designed for automated laundry systems, it balances pH, reduces static-cling and aids drying time by untangling the fibres.

APPEARANCE Creamy Green Liquid  
FRAGRANCE Floral Musk  
pH 1.5 (@100%)



REORDER  
20L FK-CHXPRMS20 | 200L FK-CHXPRMS200



## HYPO WHITE

Concentrated Sodium Hypochlorite Solution 12+%  
MPI Approved Generic 4.1.2

Commercial grade concentrated Sodium Hypochlorite solution for a wide range of applications. It is suitable for removing a wide range of stains from white fabric including mould and mildew.

APPEARANCE	Clear & Slightly Yellow Liquid
FRAGRANCE	No Fragrance
pH	13 (@100%)

REORDER  
20L FK-CHXHW20 | 200L FK-CHXHW200



## HYDROGEN PEROXIDE 60%

Concentrated Technical-Grade Laundry Bleach And Disinfectant  
MPI Approved Generic 4.1.2

A powerful laundry destainer and sanitiser which is dispensed through Chemex's automatic laundry system. Removes stains and whitens a wide range of fabrics and is often suitable for use where chlorine based bleaches are not appropriate. Not suitable for domestic applications.

APPEARANCE	Clear Colourless Liquid
FRAGRANCE	No Fragrance
pH	<4 (1% w/v solution)

REORDER  
25L RM-HYPR01



## ENZI LOW TEMP

Bio-Active Laundry Concentrate  
MPI Approved C33

An enzymatic detergent which can be used as a stand-alone or as a one-shot boost additive for extra stain-removing power on laundry linen and garments. Combats a wide range of soiling and is ideal for commercial laundries, nursing homes and hotels.

APPEARANCE	White Powder
FRAGRANCE	No Fragrance
pH	11.5 (@1% soln)

REORDER  
20KG FK-CHXELTP20



## LAUNDRY SOLVE

Laundry Stain Remover  
MPI Approved C33

A concentrated, fast-acting agent that removes stubborn grease and oil stains and can be used as a laundry additive or spot pretreatment. It can be used for cotton, polyester and their blends. Safe on wool.

APPEARANCE	Clear Liquid
FRAGRANCE	No Fragrance
pH	n/a

REORDER  
5L FK-CHXLAUS05



## DESTAINER

Multi Purpose Stain Remover

High strength oxygenated bleach for a wide spectrum of applications. An excellent pre-soaker and stain remover for crockery, plastics, and cutlery. Also cleans and sanitises laundry fabrics. Not suitable for use on delicatas such as wool or silk.

APPEARANCE	White Powder
FRAGRANCE	No Fragrance
pH	10.5 (@1% Soln)

REORDER  
10KG FK-CHXDEST10



## OXY-GONE

Laundry Pre-Clean for Inorganic Soiling

Ready to use powerful laundry pre-clean spot treatment for inorganic soiling such as rust and lime stains. Its thickened consistency allows longer contact time on treated laundry garments and linen.

APPEARANCE	Viscous Beige Liquid
FRAGRANCE	No Fragrance
pH	1.0 (@100%)

REORDER  
5L FK-CHXOXS05



## GO REMOVER

Laundry Prespotter

Powerful pre-wash laundry spotter. Removes difficult stains and is particularly effective on oil, grease spots, cuffs and collars.

APPEARANCE	Clear Colourless Liquid
FRAGRANCE	No Fragrance
pH	12.9 (@100%)

REORDER  
5L FK-CHXGOR05



## PREMGEN

Fragranced Fabric Softener

Formulated to leave both cotton and blended fabrics feeling fresh and soft. It reduces static-cling and linting, leaving a soft pleasant scent. Septic tank safe, when used as directed.

APPEARANCE	Pink Liquid
FRAGRANCE	Floral
pH	3.3 (@100%)

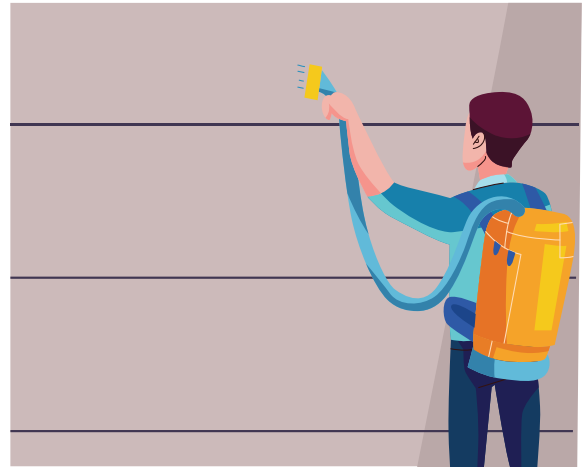
REORDER  
5L FK-CHXPG05 | 20L FK-CHXPG20



# EXTERIOR SURFACES

Clean exteriors not only enhance a buildings appearance, they can make it easier to detect maintenance issues. Clean pathways and concrete also increases user safety.

For a long-term clean on the outside of buildings, Chemex provides easy to apply, concentrated, chlorine-free options to control moss, mould, mildew, fungi and lichen. Applied with a brush or spray there are options for concrete, paths, roofs, decks and driveways. This range also includes biodegradable and sanitising options.



## PRO MOSS KILL

Algae Mould Moss & Lichen Control



A concentrated cleaner that removes and controls re-growth of moss, mould, mildew and lichen. Its prolonged action makes the product, time and cost effective. Biodegradable at recommended dilution rates.

APPEARANCE	Clear Green Liquid
FRAGRANCE	No Fragrance
pH	9.5 (@100%)

REORDER  
20L FK-CHXPMKL20 | 200L FK-CHXPMKL200



## FOAM Q

Foaming Cleaner & Sanitiser  
MPI Approved C43

A powerful cleaner & sanitiser, effective against a wide range of microorganisms. It can be applied manually or with a foaming gun, which makes it ideal for treatment of large and otherwise hard to access areas.

APPEARANCE	Clear Green Liquid
FRAGRANCE	No Fragrance
pH	14.0 (@100%)

REORDER  
20L FK-CHXFOMQ20



## HYPO WHITE

Concentrated Sodium Hypochlorite Solution 12+%  
MPI Approved Generic 4.1.2

Commercial grade concentrated Sodium Hypochlorite solution for a wide range of applications. It is suitable for removing a wide range of stains from white fabric including mould and mildew.

APPEARANCE	Clear & Slightly Yellow Liquid
FRAGRANCE	No Fragrance
pH	13 (@100%)

REORDER  
20L FK-CHXHW20 | 200L FK-CHXHW200



# FLEET & TRANSPORT

We understand that your vehicles and their condition can be one of the most visible parts of your business. Whether they are lightly or heavily soiled, Chemex Fleet & Transport products can help to keep them looking clean and well maintained.

Clean with hot or cold water, shampoo and shine in one using Chemex's biodegradable fleet care formulations. Finish off the interior wood, plastic, vinyl and rubber with the multi-surface reviver.



## FLEET RELEASE

Fleet Cleaner



A heavy-duty fleet cleaner effective in hot or cold water. It removes exhaust deposits and road grime. The unique blend of surfactants aids soil release and prevents dirt re-deposition.

APPEARANCE	Clear Blue Liquid
FRAGRANCE	No Fragrance
pH	13.5 (@100%)

REORDER  
20L FK-CHXFTR20 | 200L FK-CHXXFTR200



## WASH N SHINE

Car Wash Detergent

Surface-safe and environmentally responsible shampoo for manual vehicle cleaning. This powerful detergent cleans windscreens, restores lustre to painted surfaces and its anti-static properties help to reduce soil re-deposition. Biodegradable with mild pH.

APPEARANCE	Clear Green Liquid
FRAGRANCE	No Fragrance
pH	7.0 (@100%)

REORDER  
5L FK-CHXWNS05 | 20L FK-CHXWNS20 | 200L FK-CHXWNS200



## SHEEN ON

Multi-Surface Reviver

Safe, economical rejuvenator with non-greasy formulation that rejuvenates and protects against discolouration, helping to extend the life of surfaces. Contains an antistatic agent reducing dust re-deposition, and natural oils. No alcohol or harsh solvents so is ideal on polished wood, plastics, vehicle dashboards, vinyl and rubber.

APPEARANCE	Creamy White Liquid
FRAGRANCE	Soft Floral
pH	6.0 (@100%)

REORDER  
5L FK-CHXFUP05



## DISPENSING EQUIPMENT

Chemex is much more than just a great products!

Using the best cleaning products for your business is a very smart move. Having the correct applicators and dispensers is even smarter!

Whatever the product and application, Chemex has the right accessories for the task.

Chemex offers a wide selection of dilution control and dispensing equipment from the world's leading suppliers including, Hydro, DEMA, SEKO and Knight. Ask about the best dispensing option for your situation to deliver cost and time management efficiencies, and to ensure safe chemical management.

## PROMAX DISPENSING SYSTEM

Simple, reliable, accurate dilution control with customisable faceplate.



## DR35 PUMP

Warewashing product dispensing.



## REFILLABLE SOAP DISPENSING SYSTEM

REORDER: BI-SBFGY1000



## MPI APPROVALS

The following are some of the MPI (formally NZFSA) Approval guidelines typical for some Chemex products. They are an abbreviated guide only and should NOT be used to replace the authorised MPI Approval classifications.

C31 This may be used in all areas. Before use all edible product and packaging material must be removed from the room.

C32 This may not be used in edible areas. The perfume must not be used to mask the odours of unsanitary conditions. This compound must be used in a manner that prevents the perfume invading any edible area.

C33 This is a laundry compound. If treated fabric directly or indirectly comes in contact with edible product, a thorough rinse with potable water must follow the laundering process.

C41 This may be used in all areas. Before use, all edible product and packaging material must be removed from the room or carefully protected. After use, surfaces must be thoroughly rinsed with potable water before production starts. This product must always be used at dilutions recommended by the manufacturer.

C43 This may be used as a no-rinse sanitiser on clean hard surfaces in licensed premises which are restricted only to the processing of fish. Before use, all edible product and packaging material must be removed from the room or carefully protected. After use, a rinse with potable water is not required but food contact surfaces must be thoroughly drained to minimise residues. When used as a sanitiser in other licensed premises, surfaces must be thoroughly rinsed with potable water before production starts. This product must always be used at the dilutions recommended by the manufacturer.

C51 This may be used as a hand washing and sanitising compound in all areas. After using this compound, hands must be thoroughly rinsed with potable water. There must be no odour left on the hands.

C52 This may be used as a barrier cream, dermatological cream, hand cleaner or body wash. This compound cannot be used by persons employed in slaughter or handling edible product at any stage during dressing or processing. This compound is not permitted in slaughter, dressing or processing areas.

C56 This may be used as a hand washing compound in all areas. After using this compound hands must be thoroughly rinsed with potable water. There must be no odour left on the hands.

These MPI guidelines are typical for some Kemsol products. They are an abbreviated guide only and should NOT be used to replace the authorized MPI Approval classifications.

## WALL RACKS

Sturdy stainless steel racks to hold chemical products.



## FOAM CARTS AND GUNS

Ideal for the Food Processing sector.



# SAFETY IN THE WORKPLACE

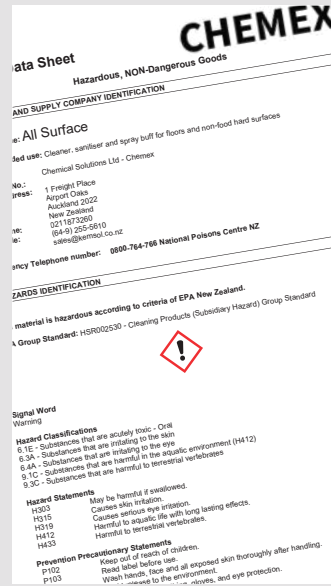
Chemex has a variety of tools to identify and understand what your work-related health and safety risks are, and to assist managing compliance under the Health and Safety at Work Act 2015 (HSWA).



## APPLICATOR LABELS

Product applicator labels are available that include precaution and first aid legislation requirements ensuring quick reference of product in any emergency.

Applicator labels have a heavy duty laminate to ensure a long durable life and the low-tack adhesive leaves no residue - perfect for recycling programs.



## SAFETY DATA SHEETS (SDS)

An essential legal component of workplace safety, they provide workers and emergency personnel with procedures for handling or working with chemical products safely.

The LEGAL requirements of a Safety Data Sheet MUST be:

- available to all commercial users
- easily locatable within reasonable time
- easily identifiable
- readable and specifically designed to NZ legislation

## STORAGE

Storing cleaning chemicals correctly is a fundamental part of Health and Safety at work. Keep cleaning chemicals in a cool, dark, and ideally, lockable location. Never store products near food items and don't store them on a shelf that is higher than eye level. Remember that some products cannot be stored safely together.

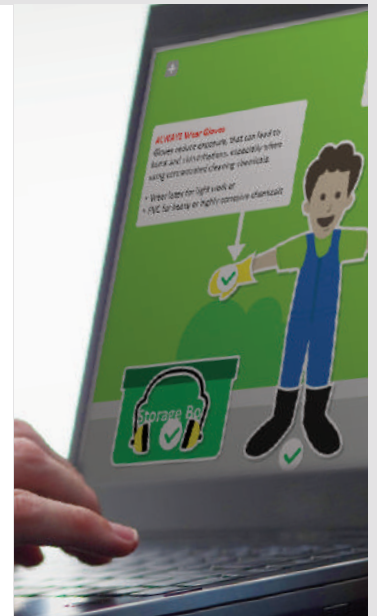
Check with your Chemical Solutions representative if you need advice on Chemex products.



## STAFF TRAINING

Making sure staff are trained in the efficient and safe use of products is critical. Chemex Safety and Awareness programs cover chemical basics, storage, risks, first aid and emergency procedures.

Customised training modules can be developed for your business. Ask your Chemical Solutions representative for more information on Chemex training.



This may be used to mask the compound must be used in a perfume invading any edible area.

## GOOD PRACTICE

Under Good Practice Protocol product as stated provides general internationally recognised and recommended minimum concentration this products

**WARNING**  
Benzalkonium Chloride  
Cleaning Products (S)  
HSR002530

Not Classified as a  
in New Zealand  
6.1E May be harmful  
6.3A Causes skin ir  
6.1A Causes serio

## GOOD PRACTICE

Good Practice statements on labels outline accepted international protocol for product dilution rate AND contact time to provide for bacteria and pathogenic control.

This helps workers and associated industry sector auditors monitor and check the right process is in place.



## WALL CHARTS

Whether generic or individually customised, the use of wall charts is a great tool for training, particularly when English is not a worker's first language.

They are particularly useful in high turnover hospitality and food service sectors, where new staff must rapidly bring themselves up to speed with exact cleaning and sanitising standards.